



Roller bearings are the standard bearing for general duty applications; they are cost effective and the best bearing for abusive and shock load applications. Not recommended for applications where side thrust is present or on rigid casters used in constant circular turns. Requires periodical lubrication. Acceptable for high temperature applications when used with metal retainer washers.

- Standard or split raceway roller bearings come complete with bearing assembly and hardened split outer raceway.
- Stainless steel roller bearings are rust resistant and come complete with bearing assembly and split outer raceway.
- Caged roller bearings feature the same bearing assembly, but have an encased outer raceway, capable of taking more abuse than standard roller bearings with split outer raceway. Requires periodical lubrication. Acceptable for high temperature applications when used with metal retainer washers. Costs more than standard roller bearings.

Bearing I.D.	Wheel Bore	Bearing Length	Wheel Hub Length	Roller Bearing Type		
				Roller (Standard)	Stainless Steel Roller	Caged Roller
1/2	15/16	1.25	1-1/2	SRBSP00		
1/2	15/16	1.5	1-3/4	SRBSP20		
1/2	15/16	1.75	2	SRBSP29		
5/8	1-3/16	1.375	1-5/8	SRBSP01		
5/8	1-3/16	1.875	2-3/16	SRBSP02		
3/4	1-3/16	1.375	1-5/8	SRBSP03		
3/4	1-3/16	1.875	2-3/16	SRBSP04	SRBSP05	SRBSP09
3/4	1-3/16	2.5	2-3/4	SRBSP06		
3/4	1-3/16	1.75	2	SRBSP08		
3/4	1-3/16	1.5	1-3/4	SRBSP36		
3/4	1-7/16	2	2-1/4	SRBSP07		
3/4	1-3/8	3	3-3/16	SRBSP38		
3/4	1-3/8	3.75	4	SRBSP40		
7/8	1-7/8	2	2-1/4	SRBSP21		
1	1-7/16	2	2-1/4	SRBSP22		
1	1-15/16	2.5	2-3/4	SRBSP23		
1	1-15/16	3	3-1/4	SRBSP24		
1	1-15/16	4	4-1/4	SRBSP35		
1-1/4	1-15/16	2.5	2-3/4	SRBSP25		
1-1/4	1-15/16	3	3-1/4	SRBSP26		
1-1/4	1-15/16	4	4-1/4	SRBSP37		
1-1/4	2-7/16	3	3-1/4	SRBSP27		
1-1/4	2-7/16	4	4-1/4	SRBSP31		
1-1/4	2-7/16	5	5-1/4	SRBSP32		
1-1/2	2-7/16	3	3-1/4	SRBSP28		
1-1/2	2-7/16	4	4-1/4	SRBSP33		
1-1/2	2-7/16	5	5-1/4	SRBSP34		
1-1/2	2-7/16	3.25	4	SRBSP39		



## DELRIN & BRONZE BEARINGS

Delrin & bronze bearings are maintenance free, are very strong and have no moving parts to break; each material has certain advantages as follows:

**Delrin:** Economical and good for wash down applications. Using a delrin bearing with a spanner bushing is suggested for stability, when used in a caster application.

**Bronze:** 954 Aluminum Bronze is very strong (Tensile Strength 90,000 PSI) and is highly resistant to corrosion, wear and high temperatures.

- Flanged style or 2 piece delrin bearings are standard and extend wheel hubs to the desired length when used in a caster.
- 1 piece delrin bearings fit flush inside wheel hubs -Note: In most cases, if used in casters there will be excessive space between wheel hub and fork leg.



Bearing I.D.	Wheel Bore	Wheel Hub & Bearing Length	Delrin Bearing Type		Bronze Bearing 1 Piece Type
			2 pc Flanged	1 Piece Type	
3/8	1-1/8	1-1/2	DLBRG55		
1/2	1-1/8	1-1/2	DLBRG59		
1/2	1-3/16	1-5/8		DLSPH12	
1/2	1-3/16	2-3/16		DLSPJ12	
1/2	1-3/16		DLBRG56		
3/4	1-3/16		DLBRG57		
3/4	1-3/16	1-5/8		DLSPH11	
3/4	1-3/16	2-3/16		DLSPJ11	BRBRG11
1	1-15/16		DLBRG58		
1	1-15/16	2-3/4			BRBRG77
1	1-15/16	3-1/4			BRBRG78



# PRECISION BALL, TAPERED BEARINGS & TOP HAT BUSHINGS

## Durable Superior Casters®



Sealed Precision Ball Bearings: offer an ergonomic solution; reducing friction & rolling resistance and require the least amount of force to start and maintain a rolling load; excellent for both manual mobility & tow line applications. Sealed precision bearings are maintenance Free! Not recommended for side thrust applications.

Tapered Roller Bearings: Heaviest duty type of roller bearings with the added advantage of tapered design. Inner & outer raceways are precision machined and heat treated. This is the best bearing for extreme duty loads & towing applications. Maximizes the weight capacity and mobility of the wheel. Requires periodical lubrication.

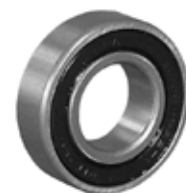
Top Hat Bushings: Used with precision ball bearings to provide exact amount of pressure on the inner raceway, prevent over tightening & stability, and adapts bore to desired axle size. May be used with plain bore wheels to provide exact spacing and adapts bore to desired axle size.

Bearing I.D. with Top Hat Bushing	Wheel Width -used in	Hub Length of Bushings	Precision Bearings -sold per piece (requires 2 per wheel). Tapered Roller bearing comes with cup & cone Spanner bushings not included with bearing and are sold separately -per piece.				
			Spanners: THS = Top Hat Spanner SP = Straight Spanner		Tapered Roller Bearing	Sealed Precision Bearing	
			Standard Steel	Stainless Steel		Standard Steel	Stainless Steel
3/8	1-1/4	1-19/32	TH9913				
3/8	1-1/4	1-19/32		TH9917			
3/8	1-1/2			SPMSBSL			PRBRG69
1/2	2		THS702712		TPBRG73		
1/2	2		THS632720			PRBRG63	
1/2	2			SPSS63J			PRBRG72
1/2	2		THS642720			PRBRG64	
5/8	3		THS653058			PRBRG65	
3/4	2-1/2		THS652534			PRBRG65	
3/4	2-1/2				TPBRG70		
3/4	3		THS653034			PRBRG65	
3/4	3				TPBRG70		
3/4	3		THS716334		TPBRG71		
1	3		THS673010			PRBRG67	
1	3				TPBRG71		
1-1/4	4		THS684014			PRBRG68	
1-1/4	4				TPBRG74		

Top Hat Bushing



Sealed Precision Ball Bearing



Tapered Roller Bearing



## FLANGED BALL BEARINGS

Sealed Precision Flanged Ball Bearings: Designed for use in non-metallic standard bore wheels and has an integrated bushing that touches in the middle, providing added strength and stability. Use of these bearings offers an ergonomic solution; reducing friction & rolling resistance and requires less amount of force to start and maintain a rolling load. Sealed precision bearings are maintenance Free! Not recommended for side thrust applications.

Flanged Ball Bearings: Offers improved mobility versus using a plain bore and are more economical than other bearing types; popular on lower capacity wheels.

Bearing I.D.	Wheel Bore	Wheel Hub Length	Bearing Type - Sold per piece. Requires 2 bearings per wheel		
			Flanged Precision	Stainless Steel Flanged Precision	Non-Precision Flanged Ball Bearing
3/8	1-1/8	1-1/2			BABRG42
1/2	1-1/8	1-1/2			
1/2	1-3/16	1-5/8			
1/2	1-3/16	2-3/16	PRBRG60		
1/2	1-3/16	2-3/16		PRBRG6S	
5/8	1-3/16	2-3/16			
3/4	1-3/16	1-5/8			
3/4	1-3/16	2-3/16			
3/4	1-3/16	2-3/16			
1/2	1-3/8	2-3/16	PRBRGP1		BABRG51
5/8	1-3/8	2-3/16	PRBRGP2		BABRG52
3/4	1-3/8	2-3/16	PRBRGP3		BABRG53
3/4	1-15/16	3-1/4	PRBRG69		

Sealed Precision Flanged Ball Bearings



Flanged Ball Bearings





Axle O.D.	Axle Length	Grade	Axle Type					
			Plain Axle	Stainless Plain Axle	Zerk Axle	Stainless Zerk Axle	Brake Shoulder Zerk Axle	Stainless Brake Shoulder Zerk Axle
5/16	2-1/8		APSF218					
3/8	2-1/8		APSA212	APTA218	AZSA218	AZTA212		
3/8	2-1/4		APSA224	APTA224	AZSA224			
3/8	2-5/16		APSA232		AZSA256	AZTA232		
3/8	2-3/8		APSA238	APTA225	AZSA238	AZTA238		
3/8	2-1/2		APSA320		AZSA225	AZTA225	AZSS250	
3/8	2-3/4		APSA234		AZSA275			
3/8	3		APSA230		AZSA300			
1/2	2-1/2		APSB250		AZSB250			
1/2	2-3/4				AZSB308			
1/2	3		APSB300		AZSB300		AZSS300	
1/2	6-1/2		APSB612					
1/2	3-1/4				AZSB314			
1/2	3-3/8				AZSB338			
1/2	3-1/2		APSB312	APTB312	AZSB312	AZTB312	AZSS312	AZTS312
1/2	4				AZSB400			
1/2	4-1/4				AZSB414			
1/2	4-1/2				AZSB412		AZSS425	
1/2	4-3/4				AZSB434			
1/2	5				AZSB500			
1/2	5-1/2				AZSB512			
3/4	4-1/4				AZSC414			
3/4	4-3/4				AZSC434			
3/4	9-9/16	*8	APSC916					
3/4	14	*8	APSC140					
1	5-1/2	*8	APSD512					
1-1/4	6-1/2	*8	APSE612					
1-1/4	12	*8	APSE120					

\*Axles made out of grade 8 material are CNC machined to fit the narrow tolerance of tapered bearings.

All axles come with correlating nuts.



Larger plain axles have hex heads, smaller axles have a rounded head with jam nipple that fit into nipple lock notch on caster yoke leg.





Bushings I.D.	Bushings O.D.	Bushings Length	Spanner Bushing Type		
			Steel Bushing	Stainless Bushing	Delrin Bushing
5/16	3/8	1	SPMSKUZ		
5/16	3/8	1-5/8	SPMSKUL		
5/16	3/8	1-11/16	SPMSKUM		
3/8	1/2	1.575			SPDLBBG
3/8	1/2	1-5/8	SPMSBBL	SPSSBBL	SPDLBBL
3/8	1/2	2-1/16	SPMSBBA		
3/8	1/2	2-1/8	SPMSBBF		
3/8	1/2	1-11/16	SPMSBBB	SPSSBBB	
3/8	1/2	1-25/32	SPMSBBD		
3/8	1/2	1-15/16	SPMSBBE		
3/8	3/4	1-11/16	SPMSBRB		
3/8	3/4	1-7/8	SPMSBRQ		
3/8	3/4	2	SPMSBRC		
3/8	3/4	2-1/16	SPMSBRA		
3/8	3/4	2-7/16	SPMSBRJ		
1/2	3/4	1-3/4	SPMSIRB		
1/2	3/4	1-7/8	SPMSIRQ		
1/2	3/4	2	SPMSIRA		
1/2	3/4	2-1/16	SPMSIRC		
1/2	3/4	2-5/16	SPMSIRD		
1/2	3/4	2-7/16	SPMSIRJ	SPSSIRJ	SPDLIRJ
1/2	3/4	2-1/2	SPMSIRK		
1/2	3/4	2-7/8	SPMSIRG		
1/2	3/4	3	SPMSIRE		
1/2	3/4	3-1/4	SPMSIRP		
1/2	3/4	3-5/8	SPMSIRT		
1/2	3/4	4-1/16	SPMSIRR		
1/2	3/4	4-1/4	SPMSIRS		
5/8	3/4	1-7/8	SPMSDRQ		
5/8	3/4	2-7/16	SPMSDRJ		
3/4	1	3	SPMSEJE		
3/4	1	3-1/2	SPMSEJK		
1	1-1/4	2-3/4	SPMSFED		
1	1-1/4	3-9/16	SPMSFEH		
1	1-1/4	4-9/16	SPMSFEI		
1-1/4	1-1/2	4-9/16	SPMSGFI		

## RETAINER & THRUST WASHERS



Washer I.D.	Washer O.D.	Washer Types: Retainer & (*Thrust washers)				
		Plastic Combination	Flat Steel	Sintered Iron Combo	Steel w/ Neoprene	Stainless Steel
3/4	1-3/16	PLTRT11	FLTRT11	PWIRT11	NPSRT11	STLRT11
1	1-7/16		FLTRT12			
1	1-15/16		FLTRT13	PWIRT13	NPSRT13	
1-1/4	1-15/16		FLTRT14		NPSRT14	
1-1/4	2-7/16		FLTRT15		NPSRT15	
1-1/2	2-7/16		FLTRT16		NPSRT16	
3/4	1-5/8		*FLTTW20			*STLTW20
1	1-1/4		*FLTTW21			
1-1/4	2-3/4		*FLTTW22			
1-1/2	3		*FLTTW23			



- Seals upper and lower swivel raceways for use on 27, 39, 67 & 69 caster series.
- Seals bearing raceway from dirt and debris, improves grease retention, can reduce noise and may prolong caster life.
- Temperature ranges: Standard -up to 140 ° F, High Temperature Neoprene Seals -20° F to 350° F.
- Unique design fits into correlating position lock notches - 4 position locks may not be used in conjunction with raceway seals.



Seal Type	
Standard Rubber (40° F to 140° F)	High-Temp Neoprene (-20° F to 350° F)
RWSEAL27	RWSEAL31



High-temp Neoprene seals may be identified by dark brown color; standard seals are black.

## THREAD GUARDS

- Protects bearings from debris and wheel hub and axle from getting threads, stretch wrap, etc; from getting wound around them and binding; which could prevent the wheel from turning and prematurely wearing out.
- Please note: Thread guards will not work with plain bore wheels and must be used in conjunction with some type of bearing or bushing.

Thread Guards			
I.D.	O.D.	Depth	Part#
0.38	3.15	0.35	TGB315
0.38	3.15	0.39	TGB325
0.38	2.25	0.35	TGB214
0.38	2.10	0.20	TGB210
0.38	1.60	0.20	TGB160
0.38	1.81	0.25	TGB180
0.51	3.15	0.35	TGA315
0.51	5.50	0.35	TGA550
0.51	3.60	0.35	TGA350
0.51	2.80	0.35	TGA280



## QUICK CHANGE CASTER PADS / PLATES

- Quick change pads offer a quick and efficient way of changing out casters on a piece of equipment; whether you change worn out casters for new ones or use the pad to alternate between casters and legs; this small investment will pay for itself many times over in the maintenance time saved. We have two main types:
- Spring Clip type: Can be welded or bolted onto equipment, once plate is fastened on equipment it does not require tools to install or change out casters.
- Bolt type: Comes un-plated to be welded onto equipment, requires tool wrench to install & change out casters.

For Use With Top Plates:	Series that have plates that fit.	Quick Change Plate Types:	
		Spring Clip Type	Bolt Type
06 = 2-3/8 x 3-5/8		CP0601	
		CP06TW	
17 = 4 x 4-1/2	27, 28, DT	CP17-02	CP100
			CP100TNT
	45		CP-100-UNI
19 = 4-1/2 x 6-1/4			CP019





- Expandable adapter kits are available in a range of sizes that are comprised of 4 parts: Bottom washer, plastic support piece, rubber expander and the fastener. Kits fit on any 1/2-13 x 2-1/2+ threaded stems; we recommend using our 70 stem (1/2-13 x 2-3/4).
- Choose a kit that at the low end of the expansion range that fits your tubing I.D., once stem is installed into tubing begin turning either the lower nut (under the raceway) or the raceway itself by hand or any hex raceway with a wrench; as the rubber piece begins to grip the inside of the tube, the fastener will tighten down on the rubber piece and expand it to hold the caster in the tubing, the stem should be tightened so that there is no movement or possibility of the caster stem coming lose. Round adapters may also be used in square tubing; however you may need to use the next size up for it to fit and grip correctly.
- #ADP7615 adapter (76) for the popular 1-1/2" I.D. has a screw or ribbed design that enables a tighter initial fit and quicker installation.

Expandable Adapter Stems			
Use in *Round Tubing I.D.	Expandable Range	Adapter Kit Part#	Stem designation when attached to a caster.
3/4	.720 - .851	ADP7134	71
7/8	.852 - .927	ADP7278	72
1	.928 - 1.029	ADP7310	73
1-1/8	1.030 - 1.140	ADP7418	74
1-3/8	1.360 - 1.425	ADP7538	75
1-1/2	1.426 - 1.589	ADP7615	76
1-7/8	1.790 - 1.850	ADP7717	77

\*Adapters may also work in square tubing (depending on the tubing size), but may require using the next size larger adapter or expanding the rubber piece further to secure the caster in the tube. Please consult your distributor or factory representative.



## PIPE THREAD STEM ADAPTER

- 3/4 NPT x 1
- Screw adapter into pipe; 7/16 grip ring stem may then be installed into adapter.

Pipe Thread Adapter Part Number
NPT34



Pipe Thread Adapter accommodates 7/16 grip ring stem

## TUBING SOCKETS & BRACKETS

- Tubing Socket Adapters fit tightly into tubing I.D. provides a strong and secure point to install a caster with a 7/16 grip ring stem. 90 & 91 stems are recommended for use with these sockets.
- 180° Bracket is designed to be screwed or welded onto equipment frame, made to secure 7/16" grip ring stem caster.

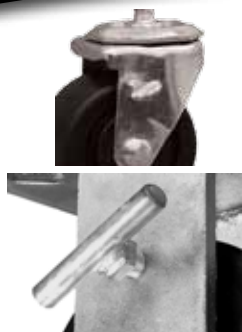


<b>Tubing Socket Adapters:</b> <i>Uses 7/16 Grip ring stems.</i>		
Socket Type	For use with Tubing I.D.	Part Number
Round	9/16	RSK58
Round	5/8	RSK34
Square	5/8	SSK34
Round	3/4	RSK78
Square	3/4	SSK78
Round	7/8	RSK10
180° Bracket	NA	FCK-91-180
Corner Bracket	NA	FCK-91-90



# BRAKE KITS

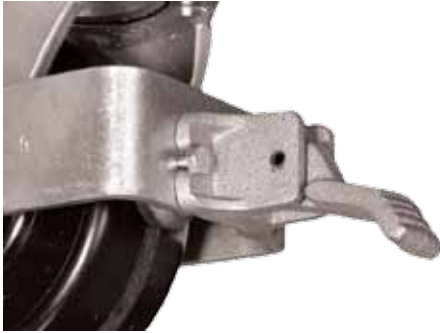
**Durable Superior Casters®**



Thumb Screw Brake			Vertical Top Lock Brake			Top Lock Brake				Stainless Steel Top Lock Brake		
Part #	Series	Screw Dia.	Part#	Wheel Dia.	Series	Part#	Wheel Dia.	Hub Length	Series	Part#	Wheel Dia.	Series
TSB0000	01, 03, 05	5/16	VLB20IA	2	03	TLB30GA	3	1-9/16	13, 23, 75	STB30GA	3	S9, 15, 73
TSB0001	05, 53/54, 55/56, 57/58, 61/62, 63/64, D1/R1, D1/R2, D3/R3, D4/R4,	1/2	VLB30IA	3	03	TLB35GA	3-1/2	1-9/16	13, 23, 75	STB40GA	4	S9, 15, 73
			VLB30DA	3	09	TLB40GA	4	1-9/16	13, 23, 75	STB50GA	5	S9, 15, 73
			VLB40DA	4	09	TLB50GA	5	1-9/16	13, 23, 75	STB40JA	4	31, S5
			VLB50DA	5	09	TLB40HA	4	1-5/8	27	STB50JA	5	31, S5
			VLB30GA	3	13, 75	TLB50HA	5	1-5/8	27	STB60JA	6	31, S5
			VLB35GA	3-1/2	13, 75	TLB60HA	6	1-5/8	27	STB80JA	8	31, S5
			VLB40GA	4	13, 75	TLB80HA	8	1-5/8	27			
			VLB50GA	5	13, 75	TLB40JA	4	2-3/16	27, 39, 43, 45, 47			
			VLB60GA	6	13, 75	TLB50JA	5	2-3/16	27, 39, 43, 45, 47			
			VLB40-79	4	79	TLB60JA	6	2-3/16	27, 39, 43, 45, 47			
			VLB50-79	5	79	TLB80JA	8	2-3/16	27, 39, 43, 45, 47			
			VLB60-79	6	79	TLB80LA	8	3-3/16	67			
						TLB10LA	10	4	67			
						TLB80JAN	8	2-3/16	69			
						TLB80JAB	8	2-3/16	69			
						TLB80LAZ	8	3-3/16	Brass plated for #69 series			



Tech-Lock Brake			Cam Brake *Side Brake			Cam Brake (*Economy Model "Side Brake")			A-Cam Brake *Shorter Lever		
Part #	Wheel Dia.	Screw Dia.	Part#	Wheel Dia.	Series	Part#	Hub Length	Series	Part#	Hub Length	Series
TKB30GA	3	13,15, 21, 73, 75	CAM25DA	2-1/2	11	CAM00HA	1-5/8	27, 39	ACB00HA	1-5/8	27
TKB35GA	3-1/2	13,15, 21, 73, 75	CAM30GA	3	11	CAM00JA	2-3/16	27, 39	ACB00JA	2-3/16	27, 39
TKB40GA	4	13,15, 21, 73, 75	CAM40FA	4	11	*CAM27AA	2-3/16	27, 39	ACB00KB	2-3/4	43
TKB50GA	5	13,15, 21, 73, 75	CAM50GA	5	13	CAM00JB	2-3/16	43	*ACB00JL	2-3/16	43
TKB40JA	4	27, 31, 39	*CAM0900	any	09	CAM00KB	2-3/4	43			
TKB50JA	5	27, 31, 39				CAM00JC	2-3/16	51			
TKB60JA	6	27, 31, 39				CAM00LA	3	67			



Face Contact Brake							
Series	Wheel Diameter	Hub Length	Part #	Series	Wheel Diameter	Hub Length	Part #
27, 39, 43, 45, 47, 49, 51	4	2-3/16	FCB40JA	63, 65	8	4-1/4	FCB80NE
	5		FCB50JA		10		FCB10NE
	6		FCB60JA		12		FCB12NE
	8		FCB80JA		8		FCB80NF
43	6	2-3/4	FCB60KA	D1	10	????	FCB10NF
	8		FCB80KA		12		FCB12NF
	10		FCB10KA		5		FCB50D1
53	5	2-3/4	FCB50KD	D2	6	?	FCB60D1
	6		FCB60KD		8		FCB80D1
	8		FCB80KD		6		FCB60D2
	10		FCB10KD		8		FCB80D2
53,55,57,61	6	3-1/4	FCB60LD	D3	10	?	FCB10D2
	8		FCB80LD		12		FCB12D2
	10		FCB10LD		6		FCB60D3
	12		FCB12LD		8		FCB80D3
63	6	3-1/4	FCB60LE	D4	10		FCB10D3
	8		FCB80LE		12		FCB12D3
	10		FCB10LE		8		FCB80D4
	12		FCB12LE		10		FCB10D4
	16		FCB16LE		12		FCB12D4

Universal plunger assembly without bracket is also available; use part#FCB0000

## 4 POSITION SWIVEL LOCK

4 Position Swivel Locks	
Part Number	For Use With Caster Series
4PSLWE	Weld-On Universal Plunger
4PSL27	27, 39, 45, 67 (Bolt-On)
4PSL31	Stainless Steel 31, S5 (Bolt-On)
4PSL43	43, 81 (Bolt-On)
4PSL47	47 (Bolt-On)
4PSL49	49 (Bolt-On)
4PSL55	55 (Bolt-On)
4PSL57	57, D1 (Bolt-On)
4PSL61	61, D2 (Bolt-On)
4PSL63	63, D3 (Bolt-On)
4PSL65	65, D4 (Bolt-On)





Floor Locks offer a foot activated braking option for equipment & carts to be used in conjunction with casters of similar heights and have a spring locking mechanism; when retracted, the casters and the cart they are attached to, can roll freely; however once the spring loaded pedal is depressed, the floor lock base with rubber pad is extended to create forceful resistance with the floor to immobilize the equipment. Please note that Floor locks are not designed to be a jack, and do not lift or directly support weight. There are three different types of floor locks.

Kick Bar Type



Pedal Lever Type



Forged Type



Floor Locks					
Part Number	Style	Corrolating Caster Size	For Use With Caster Series	Extended Height	Retracted Height
FL40017	Kick Bar Type	4	27, 39, 43, 45, 47, 49	5-3/4	5-1/16
FL50017		5		6-5/8	5-5/8
FL60017		6		7-5/8	6-5/8
FL80017		8		9-5/8	8-5/8
FL40117	Pedal Lever Type	4		5-7/8	4-5/8
FL50117		5		6-3/4	5-1/2
FL60117		6		7-3/4	6-1/2
FL80117		8		9-3/4	8-1/2
FL60319	Forged Type	6	43, 45, 47, 51, 53, 57	7-3/4	6-11/16
FL60325		6	55, 61, D1, D2	8-1/2	7-1/8
FL80319		8	43, 45, 47, 51, 53, 57, D1	10-1/4	9-1/8
FL80325		8	55, 61, D2	10-5/8	9-1/2
FL10319		10	43, 45, 47, 51, 53, 57	11-5/8	10-1/2
FL10325		10	55, 61, D2	12-5/8	11-1/2

## BUMPERS

Bumpers help protect equipment from impact shock as well as walls and doors from dents and scratches. Caster bumper and corner bumpers are made out of polyurethane, corner bumpers are reinforced with a steel insert. Donut handle bumper is made out of rubber.

Caster Bumper

Corner Bumpers



Donut Handle Bumper

Bumpers			
Type	Dimensions	Use with or attaching method	Part#
Corner Bumper Gray	3 x 3 x 1	Two 5/16 mounting holes on each side	CB100G
Corner Bumper Black	3 x 3 x 1	Two 5/16 mounting holes on each side	CB100B
Round Caster Bumper Gray	3-1/2 O.D.	Use with 95 stem	CB200
Donut Handle Bumper Gray	3-1/4 O.D.	1/4 bolt (not included)	CB300

Weld Plates are un-plated with a light anti-rust treatment and are used by welding the plate onto a piece of equipment as a reinforcement or an aid in attaching casters. Shim plates are zinc plated and are meant to be bolted between the equipment and the caster plate as a shim -to increase the height of the caster. Plates match the common size and bolt hole patterns of our most popular caster series.

Overall Size	Bolt Hole Pattern	Weld Plate (Unplated)	Shim Plate (Zinc Plated)
2-3/8 x 3-5/8 (.215" thick)	1-3/4 x 2-7/8 slotted to 3	14ZZZZZZZZ06YY	14ZZZZZZZZ06SP
3-1/8 x 4-1/8 (.215" thick)	1-3/4 x 2-15/16 to 2-3/8 x 3-3/8		14ZZZZZZZZ11SP
4 x 4-1/2 (.175" Thick)	2-5/8 x 3-5/8 slotted to 3 x 3	28ZZZZZZZZ17YY	28ZZZZZZZZ17SP

#28ZZZZZZZZ17SP

#14ZZZZZZZZ06SP

#14ZZZZZZZZ11SP



#28ZZZZZZZZ17YY

#14ZZZZZZZZ06YY

## RUBBER CAP FOR DOLLIES

Rubber dolly end cap fits the standard dimensions of moving dollies and offers a cushion buffer and non-slipping surface. Fits 18 x 3 end board and is 1" deep.

PART# DC1830



## SPRING LOADED LATCHES

Spring loaded latches for a variety of applications including, but not limited to:

- Caster Locks
- Shipping Racks
- Industrial Containers
- Collapsible Shelves
- Industrial Rollers



ROUND BARREL - ANGELED PLUNGER			
Part Number	Plunger Diameter	Barrel Diameter	Barrel Length
RKLR001	5/8	1	2-3/4

ROUND BARREL - ROUND NOSE PLUNGER			
Part Number	Plunger Diameter	Barrel Diameter	Barrel Length
RKLR002	7/16	3/4	1-7/16



HEXAGON BARREL - BEVELED PLUNGER			
Part Number	Plunger Diameter	Barrel Diameter	Barrel Length
RKLH001	5/8	1	2

